

EXtract 810 stainless steel



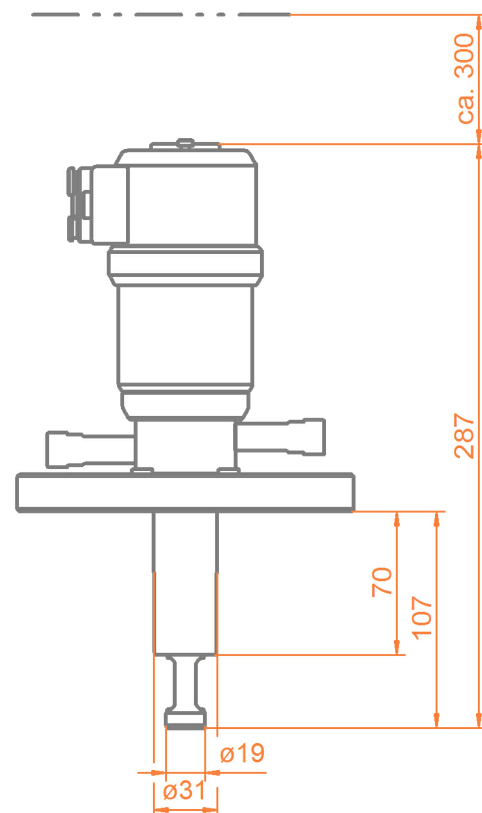
- » Robust design, integrated scraper
- » Extension of sensor-lifetime and reducing of maintenance efforts
- » Automatic safety lock while sensor is removed
- » Plug and play installation, colour- and size-coded connection system
- » Integrated limit switches
- » Usable in ATEX-areas
- » Immersion length up to 107mm

EXtract 810 is a pneumatically operated retractable probe housing made of stainless steel or Alloy C22 for installation of Ø12-225mm sensors on tanks or pipelines for fully automated sensor treatment.

Specifications

Process pressure	0...16bar
Process temperature	-10...140°C
Ambient temperature	-10...70°C
Immersion length	up to 107mm
Sensors	Ø12-225mm PG 13.5
Materials	stainless steel 1.4404 /316L, Alloy C22 (2.4602)
Sealings	EPDM, FPM (Viton), FFKM (Kalrez)
Process connection	Flange DN32, DN40, DN50, ANSI 1 1/4", ANSI 1 1/2", ANSI 2", MNPT 1 1/4", TriClamp 1.5", TriClamp 2"
Cleaning ports	G1/8", G1/4", FNPT 1/4"
Operating power	compressed air 4...6 bar
Limit switches	pneumatic, integrated

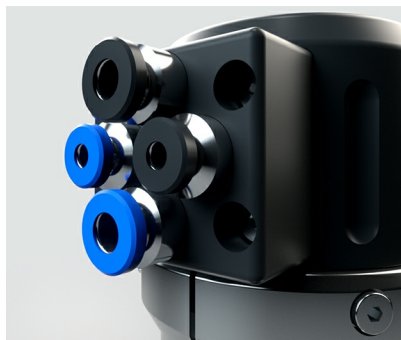
Dimensions



EXtract 810 stainless steel



Protecting cage in process position



Connection board EXtract



Installation on EXtract 820 with flow vessel EXflow720

Ordercode

Code	Material (wetted parts)	Delivery
4404	Stainless steel 1.4404 / 316L	2 weeks
HC22	Alloy C22 2.4602	4 weeks

Code	Sealing material (wetted sealings)	Delivery
EPD	EPDM/FDA/USP VI	2 weeks
FPM	FPM (Viton)	2 weeks
FKM	FFKM (Kalrez)	3 weeks

Code	Sensor type	Delivery
225	225mm PG 13,5 gel-filled	2 weeks
280	280mm PG 13,5 liquid filled	2 weeks

Code	Process connection	Delivery
D32	Flange DN32 PN16	2 weeks
D40	Flange DN40 PN16	2 weeks
D50	Flange DN50 PN16	2 weeks
A14	Flange ANSI 1 1/4" 150lbs	2 weeks
A12	Flange ANSI 1 1/2" 150lbs	2 weeks
A20	Flange ANSI 2" 150lbs	2 weeks
N14	NPT M 1 1/4"	2 weeks
T15	TriClamp 1-1,5" (OD Ø50.5mm)	2 weeks
T20	TriClamp 2.0 (OD Ø64mm)	2 weeks

Code	Cleaning connection	Delivery
G18	G 1/8" female thread	2 weeks
G14	G 1/4" female thread	2 weeks
N14	1/4" NPT female thread	2 weeks

Code	Position switch	Delivery
PN	pneumatic	2 weeks